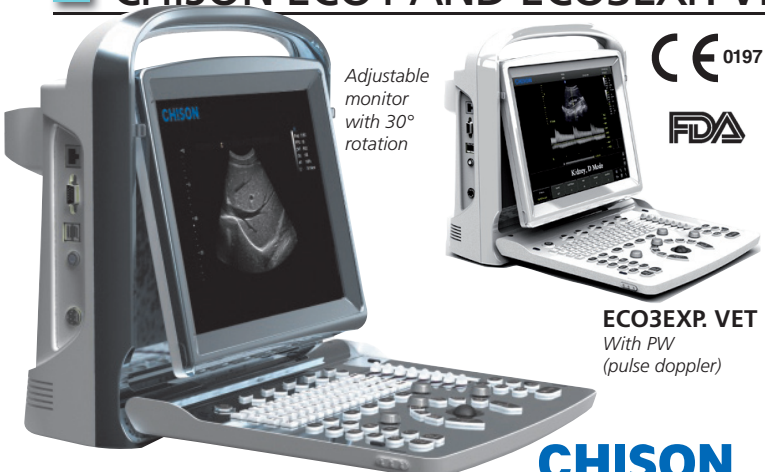


# CHISON ECO1 AND ECO3EXP. VET DIGITAL ULTRASOUND SYSTEMS



Adjustable monitor with 30° rotation



**ECO3EXP. VET**  
With PW (pulse doppler)



**ECO1 VET**

- 33994 CHISON ECO1 VET with 1 probe connector without probe
- 33995 CHISON ECO3EXP. VET with 2 probe connectors without probe

- ultra-compact and ultra-light weight, easy to carry
- latest LED screen technology, super bright images allow to easily view scan even outdoor.
- ergonomic monitor design, 30 degree rotation, adjustable.
- ultra-long battery life up to 2 hours, for outdoor scanning
- one-key to enlarge image to full screen, easy to view from distance
- streamlined workflow, easy to operate, 6-one-key to finish the cycle of diagnosis.

**Display modes and imaging processing**

B, B/B, 4B, M, B/M, PW (ECO3EXP. only) multi-frequency imaging

**Imaging processing**

- compound Imaging
- l-image intelligent image optimization
- THI (Tissue Harmonic Imaging)
- SRA (Speckle Reduction Algorithm)
- full digital beam-former
- full screen display
- trapezoidal
- automatic PW trace (ECO3EXP. only)
- Chroma
- AIO (Automatic Image Optimization)

**User interface**

- fold-up control panel and alphanumeric keyboard
- back-lit keyboard for good visibility in dark room
- interactive back-lighting
- indicator lights identify activated keys
- 8 TGC slides for easy adjustment
- short cut knob for quick adjustment (hot key user- defined)
- neat and clear keyboard layout, doctor can remember easily
- user defined preset

**Streamlined workflow, one key to:**

- select desired application with automatic preset
- optimize the image automatically (AIO)
- save still image and CINE loop
- print to PC printer\* (laser or inkjet) or video printer
- Make report
- Measure

\*See list of compatible printers on our website

**EASYVIEW™ Archive system**

- image archive on hard disk and USB mobile storage
- 3 USB ports
- multiple image formats: BMP, JPG, DCM, CIN, AVI
- cine review: auto, manual (auto review segment can be set) for 2D, M, PW (ECO3EXP. only) images
- cine memory capacity (256 frames/10s)

	STANDARD PACKAGE		
	ECO1	ECO3EXP.	ECO5
12" high resolution LED monitor - B&W	•	•	•
12" high resolution LED monitor - colour	•	•	•
8G memory card	•	•	•
Hot Key	•	•	•
PC printer connection	•	•	•
3 USB port	•	•	•
1 ethernet port	•	•	•
1 video out port, 1 VGA out port	•	•	•
1 footswitch port	•	•	•
Full screen display	•	•	•
2 hours rechargeable lithium-ion battery	optional	•	•
Power adaptor	•	•	•
Standard software package	•	•	•
Easy View image archive system	•	•	•
THI	•	•	•
PW (doppler function to detect blood flow speed)	•	•	•

TECHNICAL SPECIFICATIONS	
Dimension and weight:	33.5x15.5xh 35 cm (13.2"x6.1"xh 13.8"); 6 kg
Display:	12" LED, high resolution 1,024x768
Power:	AC 100-240 V - 50/60 Hz
	rechargeable lithium-ion battery (ECO1 option, ECO3EXP. standard)

LANGUAGE - switchable by user									
	GB	IT	FR	ES	DE	CZ	TR	CN	RU
Software	•	•	•	•	•	•	•	•	•
User manual	•	•	*					*	

\*On request

# CHISON ECO5 VET COLOUR DOPPLER DIGITAL ULTRASOUND SYSTEM



Dicom 3.0  
VGA  
USB

12" LED monitor (0-30°)

Dual probe-holder



**ECO5 VET**

**34008**

- 34008 CHISON ECO5 VET Colour Doppler 12" high resolution colour LED monitor, 8G high speed memory, 3 USB ports, 2 probe connectors, EASYVIEW™ archive system, without probe

**Imaging processing:**

- MCI (Multiple Compound Imaging)
- i-image intelligent image optimization
- THI (Tissue Harmonic Imaging)
- SRA (Speckle Reduction Algorithm)
- full digital beam-former
- trapezoidal
- automatic PW trace
- Chroma
- full screen display model
- AIO (Automatic Image Optimization)

**Other specifications as ECO3EXP.**

**TECHNICAL SPECIFICATIONS**

Dimension and weight: 33.5x15.5xh 35 cm (13.2"x6.1"xh 13.8"); 6.5kg  
 Display: 12" LED, high-resolution colour 1,024x768  
 Power: AC 100-240 V, 50-60 Hz  
 Rechargeable lithium-ion battery

# PROBES AND ACCESSORIES FOR CHISON ECO SERIES

PROBES ECO1 - 3 - 5			FREQUENCY(MHz)		Main application				
GIMA code	CHISON code	Scanning method	Main freq.	Probe band width	CANINE	FELINE	OVINE	EQUINE	BOVINE
33998	C3-A	Convex	3.5	2.5 - 5.0					
33999	L7M-A	Linear*	7.5	5.3 - 10.0	•	•	•	•	•
33871	L7S-A	Linear**	9.0	5.3 - 11.0	•	•	•	•	•
34000	L7V-A	Trans-rectal	7.5	5.3 - 10.0			•		
33997	MC6-A	Micro-convex	6.0	4.5 - 8.0	•	•			
33874	MC3-A	Micro-convex	3.0	2.5 - 5.0	•	•	•	•	•

\*With 40 mm footprint, general linear probe

\*\*With 30 mm footprint for superficial tissue exams with higher resolution

GIMA code	ECO SERIES ACCESSORIES
33869	Rechargeable lithium-ion battery BT-2500 (2.5 hours)
33867	ECO trolley TR-9000
33868	Carrying case
33866	Needle guided brackets - specify for which probe (available for 33998-9, 33874 only)
PRINTERS	
33968	SONY UP-X898 MD B&W printer (for ECO1 and ECO3EXP.)
33993	SONY UP25MD colour printer(for ECO5)

