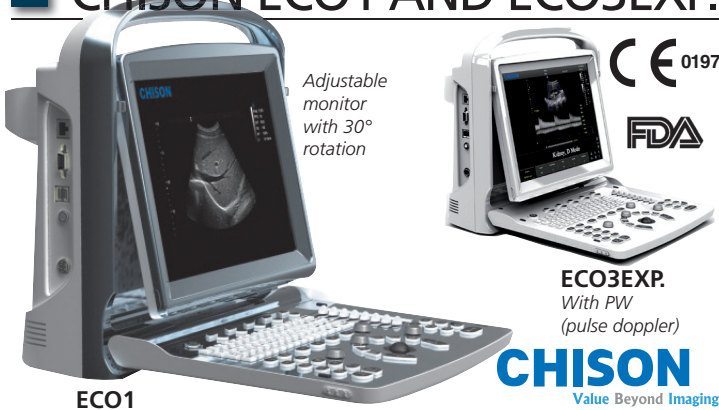


# CHISON ECO1 AND ECO3EXP. DIGITAL ULTRASOUND SYSTEMS



Adjustable monitor with 30° rotation

ECO3EXP. With PW (pulse doppler)

**CHISON**  
Value Beyond Imaging

GIMA code	DIGITAL ULTRASOUND B&W DIAGNOSTIC IMAGING SYSTEM	ECO1	ECO3EXP.	ECO5					
33863	CHISON ECO1 with 1 probe connector without probe	•	•	•					
33864	CHISON ECO3EXP. with 2 probe connectors without probe	•	•	•					
<b>STANDARD PACKAGE</b>									
	12" high resolution LED monitor - B&W	•	•	•					
	12" high resolution LED monitor - colour	•	•	•					
	8G memory card	•	•	•					
	Hot Key	•	•	•					
	PC printer connection	•	•	•					
	3 USB port	•	•	•					
	1 ethernet port	•	•	•					
	1 video out port, 1 VGA out port	•	•	•					
	1 footswitch port	•	•	•					
	Full screen display	•	•	•					
	2.5 hours rechargeable lithium-ion battery	optional	•	•					
	Power adaptor	•	•	•					
	Standard software package	•	•	•					
	Easy View image archive system	•	•	•					
	THI	•	•	•					
	PW (doppler function to detect blood flow speed)	•	•	•					
<b>TECHNICAL SPECIFICATIONS</b>									
Dimension and weight: 33.5x15.5xh 35 cm (13.2"x6.1"xh 13.8"); 6 kg									
Display: 12" LED, high resolution 1024x768									
Power: AC 100-240 V - 50/60 Hz rechargeable lithium-ion battery (ECO1 option, ECO3EXP. standard)									
<b>LANGUAGE - switchable by user</b>									
	GB	IT	FR	ES	DE	CZ	TR	CN	RU
Software	•	•	•	•	•	•	•	•	•
User manual	•	•	•	•	•	•	•	•	•

**ECO1 Premium Design, Surprising Price**  
**ECO3EXP. Premium Black&White Model with Doppler,**  
 - ultra-compact and ultra-light weight, easy to carry  
 - latest LED screen technology, super bright images allow to easily view scan even outdoor.  
 - ergonomic monitor design, 30 degree rotation, adjustable.  
 - ultra-long battery life up to 2.5 hours, for outdoor scanning  
 - one-key to enlarge image to full screen, easy to view from distance  
 - streamlined workflow, easy to operate, 6-one-key to finish the cycle of diagnosis.

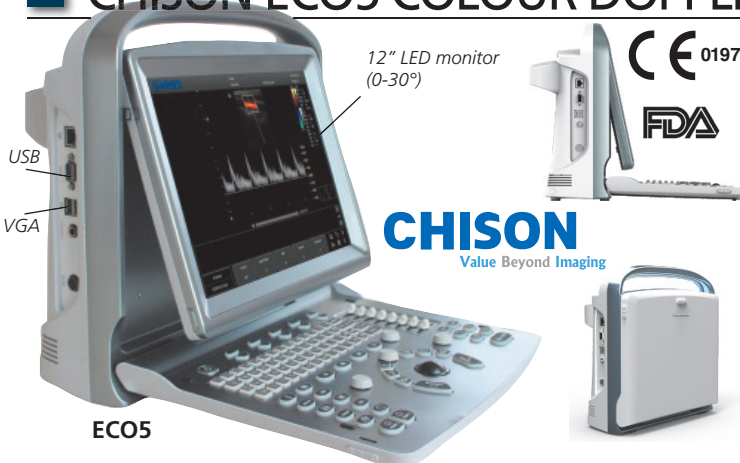
**Display modes and imaging processing**  
 B, B/B, 4B, M, B/M, PW (ECO3EXP. only) multi-frequency imaging  
**Imaging processing**  
 - compound Imaging  
 - i-image intelligent image optimization  
 - THI (Tissue Harmonic Imaging)  
 - SRA (Speckle Reduction Algorithm)  
 - full digital beam-former  
 - full screen display

**User interface**  
 - fold-up control panel and alphanumeric keyboard  
 - back-lit keyboard for good visibility in dark room  
 - interactive back-lighting  
 - indicator lights identify activated keys  
 - 8 TGC slides for easy adjustment  
 - short cut knob for quick adjustment (hot key user- defined)  
 - neat and clear keyboard layout, doctor can remember easily  
 - user defined preset

**Streamlined workflow, one key to:**  
 - select desired application with automatic preset  
 - optimize the image automatically (AIO)  
 - save still image and CINE loop  
 - print to PC printer\* (laser or inkjet) or video printer  
 \*See list of compatible printers on our websites

**EASYVIEW™ Archive system**  
 - image archive on hard disk and USB mobile storage  
 - 3 USB ports  
 - multiple image formats: BMP, JPG, DCM, CIN, AVI  
 - cine review: auto, manual (auto review segment can be set for 2D, M, PW (ECO3EXP. only) images  
 - cine memory capacity (256 frames/10s)

# CHISON ECO5 COLOUR DOPPLER DIGITAL ULTRASOUND SYSTEM



12" LED monitor (0-30°)

**CHISON**  
Value Beyond Imaging

• **33865 CHISON ECO5 Colour Doppler 12" high resolution color LED monitor, 8G high speed memory, 3 USB ports, 2 probe connectors, EASYVIEW™ archive system, without probe Imaging model: B, B/B, 4B, B/M, M, CFM, PW**  
**Imaging processing:**  
 - MCI (Multiple Compound Imaging)  
 - i-image intelligent image optimization  
 - THI (Tissue Harmonic Imaging)  
 - SRA (Speckle Reduction Algorithm)  
 - full digital beam-former  
 - full screen display model  
 - AIO (Automatic Image Optimization)  
**Other specifications as ECO3EXP.**

TECHNICAL SPECIFICATIONS	
Dimension and weight:	33.5x15.5xh 35 cm (13.2"x6.1"xh 13.8"); 6.5kg
Display:	12" LED, high-resolution colour 1024x768
Power:	AC 100-240 V, 50-60 Hz Rechargeable lithium-ion battery

# PROBES AND ACCESSORIES FOR CHISON ECO SERIES

PROBES ECO1 - 3 - 5					FREQUENCY(MHz)					Main application				
GIMA code	CHISON code	Scanning method	Main freq.	Probe band width	ABDOMINAL	OB&GYN	UROLOGY	SMALL PARTS	BASIC CARDIOL.	MSK	VASCULAR	PEDIATRIC	ORTHOPAE.	
33998	C3-A	Convex	3.5	2.5 - 5.0	•	•	•	•	•	•	•	•	•	
33999	L7M-A	Linear**	7.5	5.3 - 10.0	•	•	•	•	•	•	•	•	•	
33871	L7S-A	Linear***	9.0	5.3 - 11.0	•	•	•	•	•	•	•	•	•	
33872	V6-A	Trans-vaginal	6.0	4.5 - 8.0	•	•	•	•	•	•	•	•	•	
33997	MC6-A	Micro-convex	6.0	4.5 - 8.0	•	•	•	•	•	•	•	•	•	
33873*	R7-A	Trans-rectal	7.5	5.0 - 10.0	•	•	•	•	•	•	•	•	•	
33874	MC3-A	Micro-convex	3.0	2.5 - 5.0	•	•	•	•	•	•	•	•	•	

\*For ECO3EXP. and ECO5 only \*\*With 40 mm footprint, general linear probe \*\*\*With 30 mm footprint for superficial tissue exams with higher resolution

GIMA code	ECO SERIES ACCESSORIES
33869	Rechargeable lithium-ion battery BT-2500 (2.5 hours)
33867	ECO trolley TR-9000
33868	Carrying bag
33866	Needle guided brackets - specify for which probe (for 33998-9, 33872-4 only)
<b>PRINTERS</b>	
33968	SONY UP-X898 MD B&W printer (for ECO1 and ECO3EXP.)
33993	SONY UP25MD colour printer (for ECO5)



33865 + 33867