

ULTRASONIC, DISINFECTABLE SPIROMETERS

- 33682 OTTHON SPIROMETER US (English) + SOFTWARE
- 33683 OTTHON SPIROMETER IT + SOFTWARE
- 33684 OTTHON SPIROMETER OTHER LANGUAGES + SOFTWARE

Size: 35x120x120 mm
Weight: 300 g

Pulmonary function diagnostics and monitoring spirometer for use by general practitioners, respiratory physicians and patients. Compact, mobile, affordable solution for screening COPD (Chronic Obstructive Pulmonary Disease) and asthma.

- automated diagnostic interpretation
 - voice and video explain use of device and communicate results
 - battery or USB charger
 - touchscreen, bright colour high resolution LCD display QVGA (320x240 px), 16 M colours
 - external printer connectivity
 - automatic internal calibration
 - flow tube disinfectable by cold sterilization
 - power supply: USB 5 V or built in rechargeable battery
- Internal software languages: GB, FR, IT, DE, ES, HU, AU, HR.
Voice languages available: US (English), AU, FR, IT, DE, ES, AT, HU.
Please indicate requested language with order.
Made in Europe.

Size: 40x60x150 mm
Weight: 300 g



FVC, MW AND VC MEASUREMENT



33686
CE 2409

- 33688 SPIROTUBE PC SPIROMETER + SOFTWARE
- 33689 SPIROTUBE B SHOCK AND WATER PROOF SPIROMETER + SOFTWARE

PC based pulmonary function diagnostics and monitoring spirometer with ultrasonic Idegen™ respiratory sensor. Suitable for screening COPD and asthma.

- automatic internal calibration
- tele-medical connection via internet
- plug & play USB PC connection detection
- easy upgrade, standard interfaces, XML, HL7
- long-term monitoring for life-long patient support
- pharmaceutical testing subsystem
- flow tube disinfectable by cold sterilization

Spirotube B Edition for harsh conditions

Features an exceptionally robust design for harsh condition and heavy use.

Power supply: USB 5 V. Made in Europe.

- 33686 SPIROTUBE MOBILE EDITION BLUETOOTH SPIROMETER

Pulmonary function diagnostics and monitoring spirometer with Bluetooth communication interface and built in rechargeable battery. Suitable for screening COPD and asthma.

- wireless connection to mobile phones, PDAs, android systems. Real-time measurement with FVC curve visible on the mobile screen
 - plug & play USB connection to PC
 - automatic internal calibration
 - tele-medical connection via Bluetooth
 - automated medical interpretation
 - long-term monitoring for home care use
 - pharmaceutical testing subsystem
 - flow tube disinfectable by cold sterilization
 - software can be freely downloaded from Google Play Store
- Made in Europe.

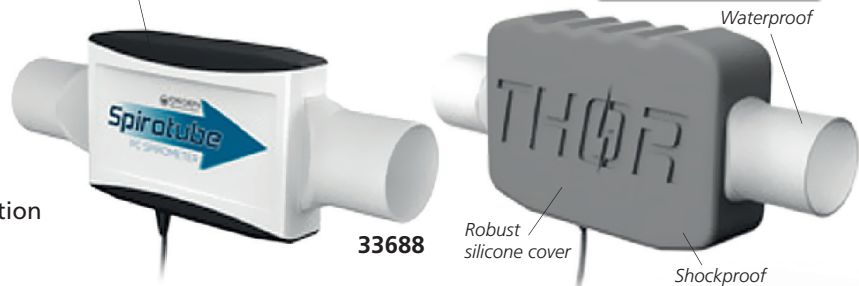


Spirotube mobile edition connects to Android based systems turning these devices into respiratory diagnostic stations

Size: 27x60x150 mm
Weight: 300 g

CE 2409

WATER PROOF SHOCK PROOF



33688

Robust silicone cover

Shockproof

	STANDARD ACCESSORIES		
	33682/3/4	33686	33688
Thorsoft software	•	•	•
Plastic mouthpieces	•	•	•
Mini USB cable	•	•	•
Cups for disinfection	•	•	•
Battery charger	•	•	•
Bacterial filter	•	•	•
Carrying bag	•	•	•
Paper manual (GB)	•	•	•
CD manual (GB, IT, ES, DE, HU)	•	•	•

TECHNICAL SPECIFICATIONS	
Flow measurement principle	Idegen™ multiple-path
Flow tube diameter	30 mm (OD)
Dead space	16.8 ml
Flow resolution	3 ml/s (33686), 8 mb/s (33682-4, 33688)
Flow precision	2% (33686, 33688), 3% (33682-4)
Flow range	±18 l/s
Connection to PC	USB

MEASURED PARAMETERS	
FVC, -FEV*0.5, FEV*0.5/IVC, FEV*0.5/FVC, FEV*1.0/IVC, FEV*1.0/FVC, PEF, FEF*25-75%, MEF*75%, MEF*50%, MEF*25%, FET, MTT, FIVC, FIV*0.5, FEV1/FVC (Tiffeneau index) FIV*1.0, PIF, FIF*25-75%, IRV, ERV, TV, Breath rate value	- Insp./Expi ratio: From 1:10 to 10:1

REGISTRATIONS

All spirometers are CE marked and registered in Indonesia, Singapore, Hong Kong, Australia, New Zealand, Korea, Saudi Arabia.

THORSOFT - PULMONARY DIAGNOSTIC PC SOFTWARE

Standard medical interfaces (HL7, GDT, BDT, XML).

Automatic interpretation module.

Diagnostic decision support system (for general practitioners and physicians)

Complete stress testing procedure

Languages: GB, FR, IT, DE, ES, SE, TR, RO, HU, SL, CZ, HR, NL, KR, CN.

GIMA code	ACCESSORIES	Minimum order
33690	Instrumed disinfectant concentrate 1 l (Bactericidal, fungicidal, virucidal, sporocidal, tuberculocidal)	
33691	Plastic mouthpieces	box of 10
33890	Disposable mouthpieces	box of 100
33692	Loki Green single use bacterial filter	box of 50
33505	Calibration syringe 3 l*	

* Ultrasonic spirometers do not need calibration. Syringe is only for check if requested by law.