

GIMA FOETAL POCKET DOPPLERS - MADE IN U.K.



• **29503 GIMA FOETAL DOPPLER D2003 with display**
Pocket foetal doppler with same specification as code 29502 but with built-in foetal heart rate processing. Foetal heart rate (FHR) is displayed on a large LCD display whilst internal signal process minimises noise artefacts.

• **29505 GIMA FOETAL DOPPLER D2005 with display and waterproof probe**

Same as code 29503 but waterproof probe and sealed electronics.

All units are supplied in a nice bag with a tube of coupling gel and user manual in English, Spanish, French, German, Italian, Greek, Portuguese.

• **29512 ON/OFF MEMBRANE SWITCH for codes 29503, 29505**



29502

29503

• **29502 GIMA FOETAL DOPPLER G2002**

Small, lightweight, high sensitivity pocket Doppler, with 2 MHz foetal probe, ideal for General Practitioner's or Midwife's use for routine antenatal foetal detection.

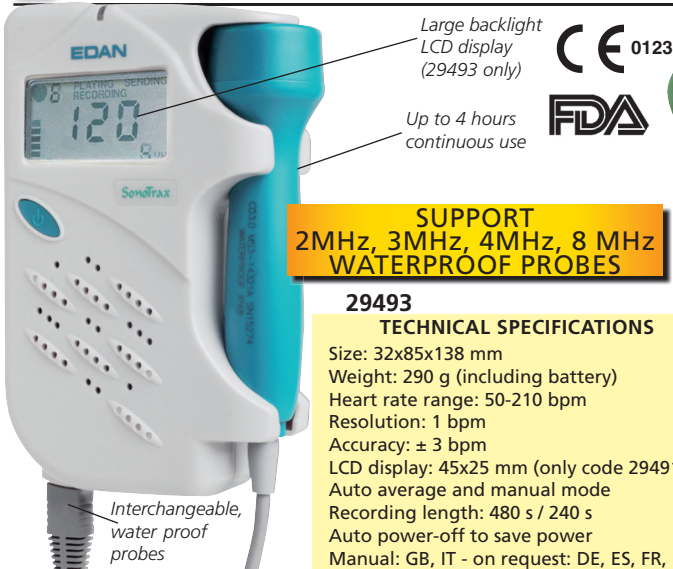
Pocket Doppler can be used to detect the beating foetal heart from about 10th week of gestation. It may be used to locate the position of the placenta, thus aiding in the early diagnosis of placenta praevia, to survey blood flow of the umbilical cord and to diagnose multiple pregnancies. Foetal signals are easily located using the lightweight narrow beam transducer while internal signal processing minimizes noise artefacts. Audio foetal heart signals are available to the user via the built-in loudspeaker or option headset, with output level controlled by rotary volume control.

• **29511 ON/OFF MEMBRANE SWITCH for code 29502**

TECHNICAL SPECIFICATION (CODES 29502 - 29503 - 29505)

Ultrasound	Frequency: 2 MHz continuous wave Transducer: 2 crystal narrow beam Output power: <10mW/mm ² SATA Audio Response 300Hz -1 KHz autocorrelator (only code 29503 and 29505)
FHR (Fetal heart rate):	50-210 bpm (29503, 29505) 60-210 bpm (29502) resolution ± 1 bpm, accuracy ± 2 bpm
Unit Controls	Keys: 1 Key (for unit on/off) Controls: rotary volume
Indicators:	3 digit FHR LCD display (codes 29503, 29505) FHR pulse icon (codes 29503, 29505), Battery low icon
Power supply	Battery 9 V Alkaline Manganese Expected battery life: 8 hours
Output	Headset: Audio output to optional headset Serial: RS232 interface (codes 29503, 29505)-jack 35 mm
Material:	ABS / Noryl
Size:	150 mm by 75 mm Weight: 295 g (with transducer)
Classification:	Class I Type B - IEC 60601-1 CE 0120
Warranty:	2 years (probe and cable included)
	Made in UK

SONOTRAX DOPPLERS



SUPPORT 2MHz, 3MHz, 4MHz, 8 MHz WATERPROOF PROBES

29493

TECHNICAL SPECIFICATIONS

Size: 32x85x138 mm
Weight: 290 g (including battery)
Heart rate range: 50-210 bpm
Resolution: 1 bpm
Accuracy: ± 3 bpm
LCD display: 45x25 mm (only code 29491-93)
Auto average and manual mode
Recording length: 480 s / 240 s
Auto power-off to save power
Manual: GB, IT - on request: DE, ES, FR, PT.

BABY SOUND GIMA DOPPLER



• **29506 BABY SOUND GIMA FOETAL DOPPLER with display and interchangeable 1MHz probe**
- portable and lightweight
- built-in speaker to hear fetal heartbeats
- numeric and trend curve display for FHR
- automatic power-off function
- backlight LCD display
- date, time, battery status display
- audible & visual FHR alarm
- 8-hour data storage
- audio-out interface
- fetal monitor DSP technology
- high-sensitivity probe
- 1 MHz or 2/2.5 working frequency
- store and recall FHR, up to 16 hours of FHR date storage
- recording function

It allows hearing regularly the heartbeat of a foetus since 20 weeks, and warns in case of serious problems of the fetus (can monitor FHR during 10-12 weeks not regularly). For home and hospital use. Supplied with gel bottle, 3 AA batteries and user manual.

• **29507 2.0/2.5 MHz DOPPLER PROBE**

• **29508 1 MHz FOETAL MONITOR PROBE**

The Fetal Doppler can be used as a portable Fetal Monitor if it works with 1MHz Fetal Monitor probe. It is suitable for long-term monitoring and will be more accurate than with the Doppler probe.

TECHNICAL SPECIFICATION

Ultrasound working frequency:	1MHz ± 5%	
Fetal heart rate: range:	50-210 bpm	
	resolution: 1 bpm	
	accuracy: ± 2 bpm	
Alarm: high limit:	160 bpm	low limit: 120 bpm
Ultrasound intensity:	< 5 mm/cm ²	
Dimension:	145x74x29 mm	
Power supply:	3 AA Batteries	Weight: 350 g



29508

GIMA code	DOPPLERS AND INTERCHANGEABLE PROBES - LATEX FREE
29490	SONOTRAX LITE DOPPLER - without probe - with bag
29491	SONOTRAX BASIC DOPPLER - with display - without probe - with carrying bag
29493	SONOTRAX PRO II DOPPLER with backlighted display built-in audio recorder and rechargeable batteries with battery charger - without probe - with carrying bag
29496	2MHz waterproof probe - gynaecology
29497	3MHz waterproof probe - gynaecology
29498	4MHz waterproof probe - vascular
29499	8MHz waterproof probe - vascular